

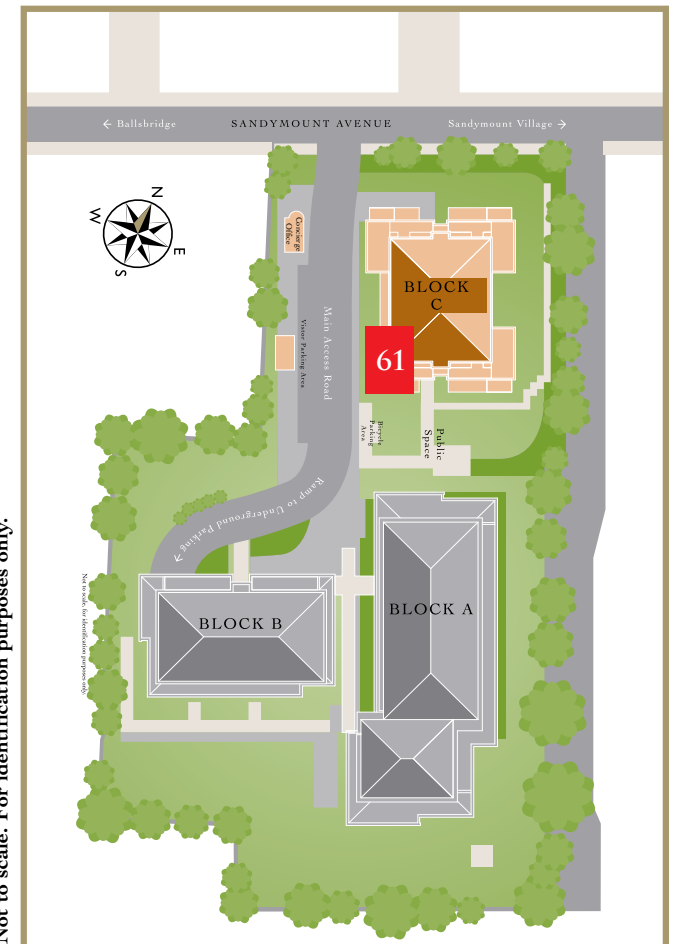
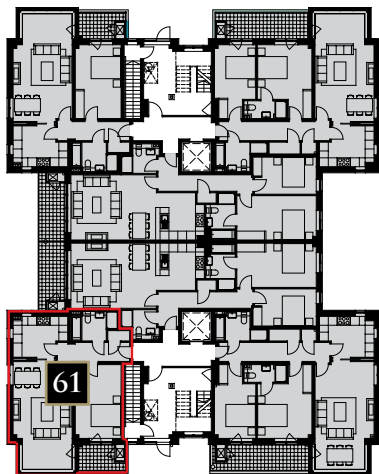
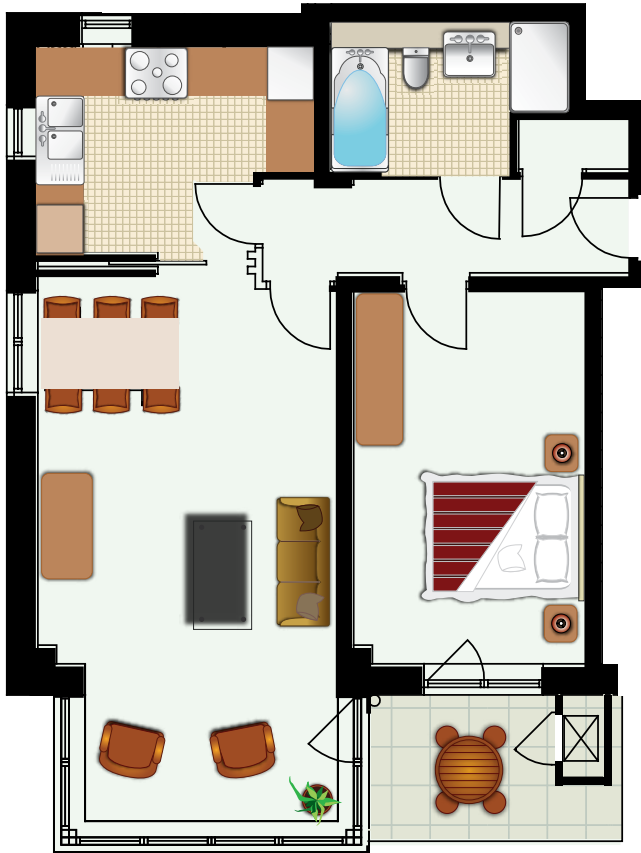
# APARTMENT 61, BLOCK C SHREWSBURY SQUARE

1 Bedroom, Ground Floor Apartment, c. 70 sq.m. (758 sq.ft.)



SHREWSBURY  
SQUARE

BALLSBRIDGE DUBLIN 4



Not to scale. For identification purposes only.

## Specification for Apartment 61 Shrewsbury Square:

### ENTRANCE HALL

- Luxurious Crema Marfil Alicante marble stone floors.
- Built-in storage closet.
- The entrance hall is wallpapered with luxury paper.

### KITCHEN

- Kitchen is contained in a separate room, with dual access to the hall and living room.
- Great natural light in the kitchen from the two dual aspect windows.
- State-of-the-art SieMatic kitchen featuring many unique storage solutions in a range of floor and eye level units.
- SieMatic design marble stone worktop
- Gaggenau built-in appliances: dishwasher, 6 ring gas hob, fridge/freezer.
- Küppersbusch washer/dryer, microwave, double oven.
- Gaggenau extractor fan and Siemens coffee maker.
- Luxurious Crema Marfil Alicante marble stone floors.

### LIVING ROOM

- Velvet Cut Pile 100% Wool Carpet.
- Wired for Media Centric home entertainment system through the apartment.
- Stylish gas fire with Italian stone mantle piece.
- Wired for projector & screen
- Unique internal winter garden glazed area which offers a bright dining experience.
- Access from the living room onto the South facing balcony.
- The living room is wallpapered with luxury paper.

### MAIN BATHROOM

- Villeroy & Boch bathtub and fittings.
- Luxurious Crema Marfil Alicante marble stone wall and floor tiles.
- Separate shower unit with Hans Grohe shower accessories.
- Zehnder Toga heated towel rail.
- Villeroy & Boch wash hand basin & fittings sitting on a custom made furniture cabinet
- Underfloor heating.

### MASTER BEDROOM

- Velvet Cut Pile 100% Wool Carpet.
- Custom designed Italian styled wardrobes.
- TV and media connection point.
- Access to South facing balcony.



## ACCESSORIES

### Doors:

- 2.3m high solid cherrywood with detailed inlay.
- Ensuite door, cherrywood with glazed panel.
- All doors complete with architectural ironmongery and glass door knobs.

### Heating:

- State-of-the-art gas fired central heating system.

### Windows:

- Dansk composite maintenance-free double glazed windows, with powder coated aluminium exterior and painted timber framed interior. Large winter garden glazing in Living room.

### Internal Lighting:

- Recessed spot lighting throughout the apartment.

### Balconies:

- South Facing frameless balcony incorporating laminated glass with stainless steel handrails.
- An external water tap for gardening and cleaning is located on the balcony.
- An electrical external waterproof socket for DIY is located on the balcony.
- Further storage area is located in balcony store.

### Storage:

- Additional storage facility located adjacent to designated underground car parking space.

### Security:

- Electronically controlled security gates leading to secure underground car park, also accessible by lifts from each apartment block.
- Video intercom entry system to all apartments.
- Wired for burglar alarm system.
- Direct line to Concierge Office

### Structural Guarantee:

- Covered by 'HomeBond' 10 Year Structural Guarantee.

### Individual Features :

- This apartment has a triple aspect. The living room windows face West and South
- There is only one other apartment on this floor.



Developer



Marketing Suite



**667 5026**

Joint Agents



**491 2600**



**631 8402**

**DISCLAIMER:** Douglas Newman Good, Hooke and MacDonald, and WPP Developments for themselves and for the vendors or lessors of the property whose agents they are, give notice that (i) The particulars are set out as a general outline for the guidance of intending purchasers or lessors, and do not constitute part of an offer or contract (ii) All descriptions, dimensions, references to condition and necessary permissions for use and occupation, and other details are given in good faith and are believed to be correct, but any intending purchasers or tenants should not rely on them as statements or representations of fact but must satisfy themselves or otherwise as to the correctness of each of them. (iii) No person in the employment of Messers Douglas Newman Good, Hooke and MacDonald, or WPP Developments has any authority to make or give representation or warranty to whatever in relation to this development.